

**SAAB**  
**900**

**Saab 900 Cabriolet**



**The Saab 900 Cabriolet  
— the unfettered car.**

Owning and driving a cabriolet is a privilege enjoyed only by a select few—even though it's almost every motorist's dream.

The Saab 900 Cabriolet is an unfettered car—with its top down, it gives you a sense of complete freedom, of being at one with the world around you. And the per-

formance and roadholding of the Saab 900 Cabriolet are equally unfettered.

Think twice before taking the Saab 900 Cabriolet out on the road—envious eyes will follow you all the way. And the chances are that you'll never want to drive any other car.















**Every driver comfort for total enjoyment.**

The instant you take the wheel of the Saab 900 Cabriolet you'll know that there's no other cabriolet to match it—driving it is an experience without comparison.

The driver's seat is of superb anatomical design, and in addition to being adjustable fore and aft, the seat cushion is adjustable for height and slope. The backrest rake is steplessly variable down to the reclining position, and the head restraint can be adjusted for height.

The facia is curved to enable you to see and reach the furthestmost controls as easily as those in front of you. In true sports car tradition, the instruments are large and round, and the gear lever on the centre console is where your hand will find it instinctively.

The controls for the electrically operated top and electric windows are also mounted on the centre console. The door mirrors are electrically operated as well, and the controls are mounted on the facia. The car is factory-fitted with speakers, automatic electric aerial and the wiring necessary for installing a radio. For truly relaxed motoring, you can switch on the Cruise Control system, take your foot off the pedal, and the electronics will keep the car travelling at the preset speed.



**The cockpit sensation**

The facia curves in front of you, with all controls and instruments clearly visible and easy to reach.



**Cruise Control**

Set the Cruise Control, take your foot off the accelerator pedal, and the car will carry on travelling at the preset speed, regardless of changes in road gradient, head-on winds, etc.



**Electrically operated door mirrors and windows**

The control switches for the electrically operated front and rear side windows are mounted on the centre console. Four way controls are provided on the facia for adjusting the door mirrors.

THE DRIVER ENVIRONMENT OF THE SAAB 900 CABRIOLET HAS BEEN CREATED TO INSPIRE ACTIVE BUT RELAXED MOTORING.





### **Ingeniously simple top**

The Saab 900 Cabriolet is an open car in the classical sense. The top drops neatly into its own storage compartment between the boot lid and the back seat, without restricting the visibility towards the rear. A special cover panel is fitted over the storage compartment, to protect the top after it has been opened. The side windows can be lowered fully to emphasise the sensation of "openness".

If the weather should suddenly change, the top can be raised electrically at the touch of a button. After it has been locked in position with two latches at the front, the top provides the same protection against the elements as the roof of an ordinary saloon.

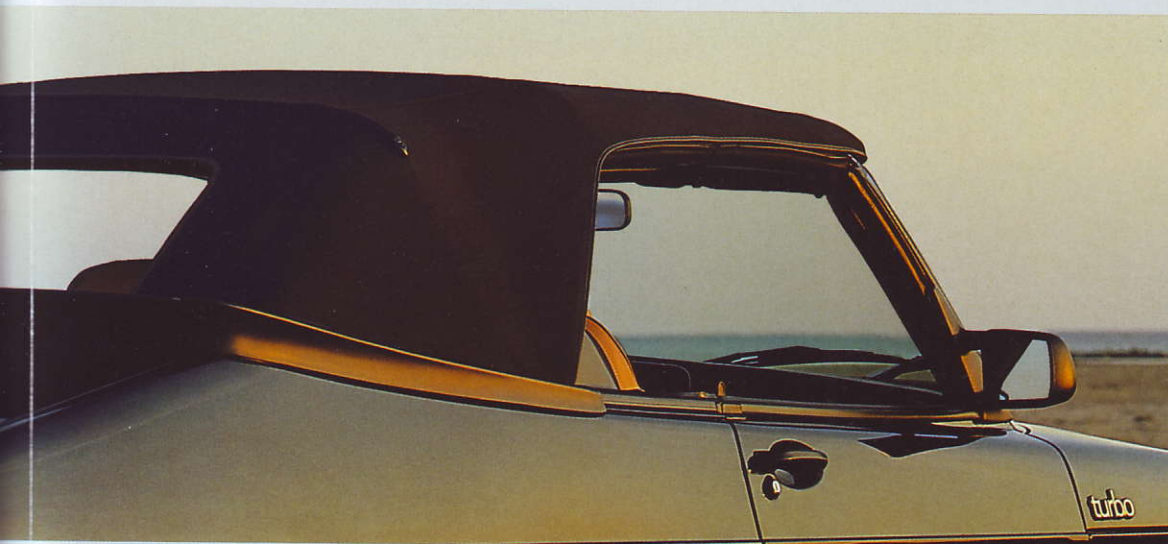


### **Electrically operated top**

The top is electrically operated by means of a switch on the centre console. It takes no more than a few seconds to raise or lower.







**Glass rear window with electric demister**

The rear window—made of glass—is secured to the top by means of a zip fastener, and drops into the storage compartment together with the remainder of the top. It can also be opened separately.











**Comfortable four-seater.**

Four adults can travel in comfort in the Saab 900 Cabriolet. The dished seats are designed for maximum comfort, and relaxing headrests pamper back-seat passengers even more. The leather upholstery has a special fragrance and dignity—and its durability makes it mature with age. Even when the top is down, the interior conveys an impression of all-encompassing security.

If you are a true cabriolet enthusiast, you will no doubt have the top down on a pleasant spring or autumn day, even if there's a nip in the air. That's when the automatic electric heating of the front seats will add comfort to the thrill of open-air motoring. The heating and ventilation system also has ample capacity to cope with the rigours of even the Nordic winter.



**Protection for the top**

When the top has been folded down, its storage compartment is protected by a cover which provides an elegant transition between the interior and the body.



**Back seat**

The back seat is comfortably dished and is fitted with headrests for two passengers. Leather upholstery is fitted as standard equipment, which gives the interior a luxurious feel and smell.



**Electrical heating**

The front seats are automatically electrically heated. The heating is adjustable on the driver's seat.

THE INTERIOR OF A SAAB 900 CABRIOLET OFFERS A COMBINATION OF SUPERB COMFORT, LUXURIOUS EQUIPMENT AND SPORTY ELEGANCE.





**Saab 900 Cabriolet**



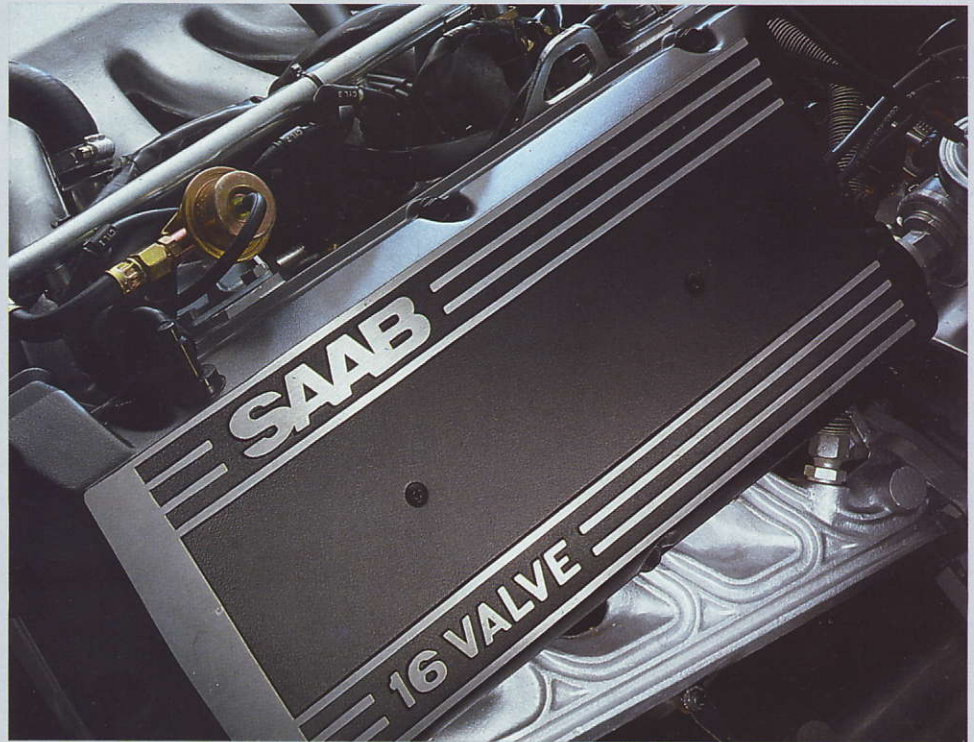




**An exclusive car with sophisticated technology.**

A car as select as the Saab 900 Cabriolet obviously has performance to match. But its refined, docile behaviour around town belies its breathtaking 175 hp Saab 16 valve turbo power unit featuring state-of-the-art refinements in engine technology.

The engine has four valves per cylinder surrounding the central spark plug, so that the high compression ratio will not cause pre-ignition. A high compression ratio improves efficiency, for optimum utilisation of fuel energy and thus high power output, but with economical fuel consumption. The Saab APC system also contributes to efficient fuel utilisation, employing a knocking sensor and an electronic unit for continuous monitoring of the engine load. The APC system enables the engine to run on any grade of fuel between 91 and 98 octane, including lead-free fuel.



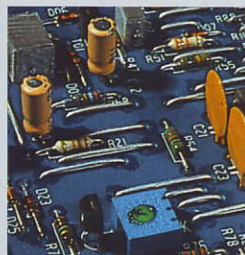
#### **The ultimate in engine technology**

The 16 valve turbocharged engine of the Saab 900 Cabriolet features an intercooler and electronic fuel injection. In spite of its breathtaking 175 horsepower, the car is very easy to drive, with ample traction power at low engine speeds.



#### **Turbo instruments**

The standard tachometer enables you to keep the engine fully under control, and a pressure gauge shows when the turbocharger has started boosting power.



#### **APC system**

The Automatic Performance Control (APC) system is an electronic engine management system that enables you to run the car on fuel between 91 and 98 octane, including lead-free.

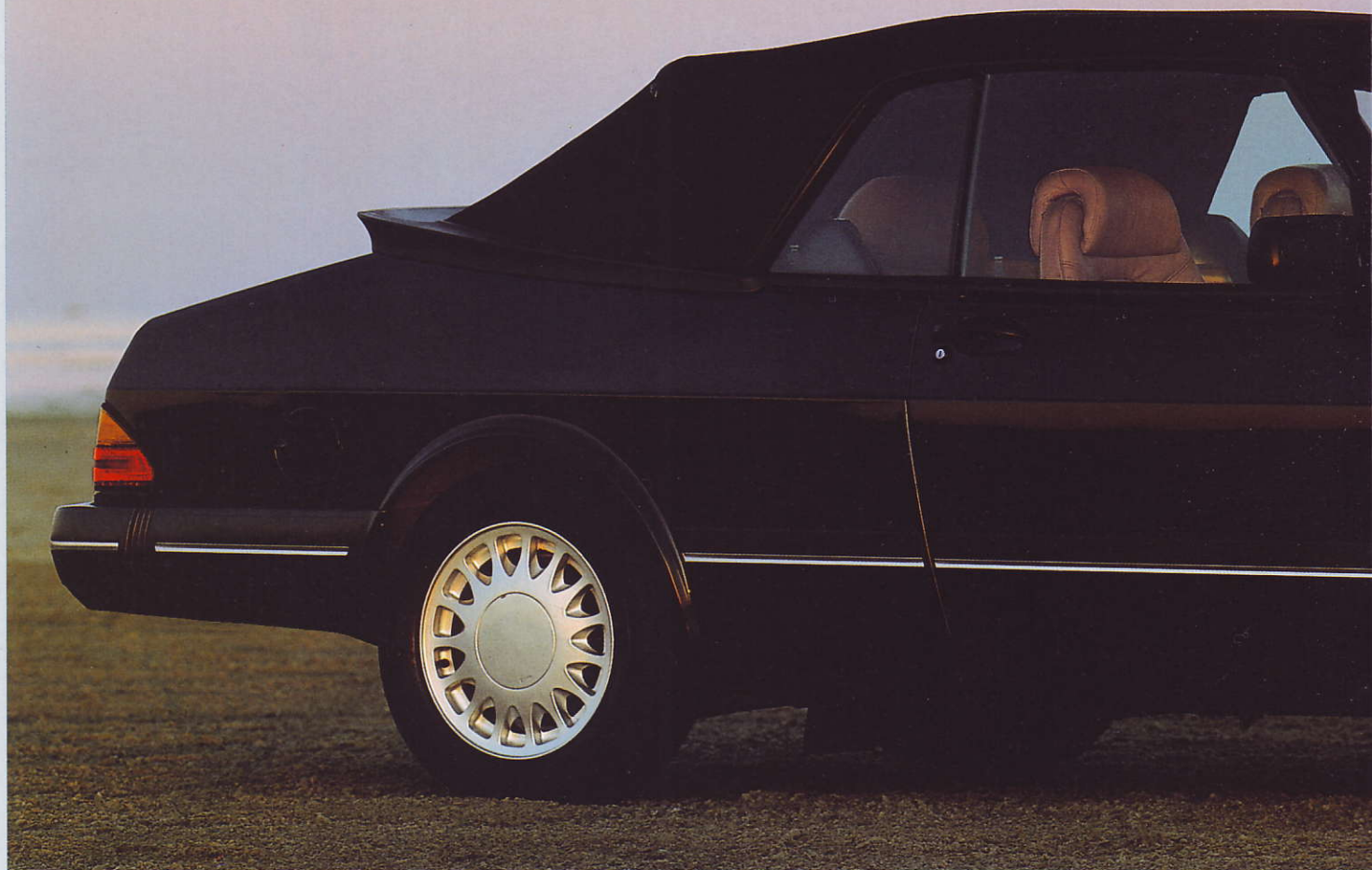


#### **LH Jetronic fuel injection**

The fuel injection system of the 16 valve engine senses the intake air mass flow. An electronic unit then determines the exact amount of fuel to be injected to suit the oxygen content of the engine intake air.

YOU CAN DRIVE SEDATELY OR SPORTILY—THE 16 VALVE ENGINE OF THE SAAB 900 CABRIOLET WILL RESPOND TO YOUR COMMANDS THROUGHOUT ITS SPEED RANGE.





### **Range of colours 1987**

The Saab 900 Cabriolet is available in five bodywork colours—each of which is elegantly highlighted by the matt-black top. The interior colour scheme matches the paintwork, and the lavish standard equipment includes choice leather upholstery on the seating surfaces.

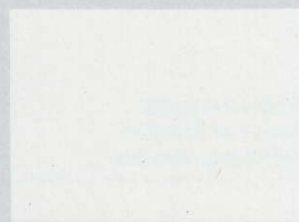
#### **BODYWORK COLOURS**



Cherry red



Black



Cirrus white



Odoardo grey metallic



Silver metallic





#### INTERIOR COLOURS



A. Colorado red



B. Sierra



C. Buffalo

#### BODY

#### INTERIOR, LEATHER

Solid colours	A	B	C
Cherry red		●	●
Black	●	●	●
Cirrus white	●		●
Metallic colours			
Odoardo grey	●	●	●
Silver	●		●

■ For printing reasons, the colours in this brochure may differ slightly from the actual colours. The combination bodywork colours/interior trim may vary from market to market. For further information, please consult your Saab dealer.



## ENGINE

Four cylinder, in-line engine, longitudinally mounted and inclined at an angle of 45°. Cast iron cylinder block and light-alloy cylinder head. Displacement 1.985 dm<sup>3</sup>. Bore 90 mm. Stroke 78 mm. Compression ratio 9.0:1. Rated at 129 kW (175 hp) DIN at 5300 rpm. Peak torque of 273 Nm (201 lb ft or 27.8 kgm) DIN at 3000 rpm. Double overhead camshafts. Five bearing camshaft and crankshaft. Dome-shaped combustion chambers with centrally located spark plugs. Four valves per cylinder. Hydraulic cam followers. Electronic fuel injection. Turbocharger. Intercooler. APC system. Electric motor driven, thermostatically controlled radiator fan. Oil cooler. Can be run on fuel of any octane rating between 91 and 98 RON, and also on lead-free fuel. Fuel tank capacity 63 litres.

## TRANSMISSION

Front wheel drive. The engine, clutch, gearbox and differential are integrated into a compact unit. Five-speed manual gearbox. Hydraulically actuated, single dry-plate clutch. The reduction between the engine and driven wheels takes place in three stages: primary drive, gearbox and final drive. The homokinetic universal joints in the drive shafts are permanently lubricated.

## ELECTRICAL SYSTEM

12V 60 Ah battery. Max. alternator output of 930 W at 14 V 70 A (1070 W 80 A on cars with factory-fitted air conditioning). Starter 1.4 kW. Breakerless electronic ignition system.

## STEERING

Power-assisted. Rack and pinion steering gear. Jointed and telescopic steering column, with cylindrical sheet metal bellows. Impact-absorbing, perforated sheet steel cage below the steering wheel. 3.7 turns lock to lock. Turning circle diameter, kerb to kerb, 33 ft 10 in (10.3 m).

## BRAKES

Dual-circuit, diagonally split brake system with vacuum servo. Self-adjusting disc brakes all round. Ventilated discs on the front wheels. The handbrake acts mechanically on the front discs. Asbestos-free pads—semi-metallic at the front and organic at the rear.

## SUSPENSION

Double wishbones and pivot-mounted, progressive action coil springs at the front. Lightweight, straight and unsplit rear axle, located by two trailing and two leading arms and a Panhard rod. Coil springs at the rear. Gas shock absorbers. Anti-roll bars front and rear.

## WHEELS AND TYRES

5½J×15" aluminium wheels. 195/60 VR 15 low-profile, high-speed tyres. Compact spare wheel.

## INSTRUMENTATION

Speedometer with odometer and trip meter. Tachometer with built-in quartz clock. Turbocharger pressure gauge. Fuel gauge. Coolant temperature gauge. Warning lamps for the seat belts, handbrake, low brake fluid level, battery charge, oil pressure, low fuel level, rear window heater, rear fog lights, high headlamp beam and direction indicators.

## LUGGAGE COMPARTMENT VOLUMES

12.8 cu.ft. (364 dm<sup>3</sup>).

## WEIGHTS

Kerb weight approx. 2910–2960 lb (1315–1340 kg). Max. total weight 3790 lb (1720 kg).

## PERFORMANCE

Top speed of 125 mph (205 km/h). Acceleration from rest to 60 mph in 8.2 seconds (to 100 km/h in 8.7 seconds).

## FUEL CONSUMPTION

### Passenger Car Fuel Consumption Energy Act 1976 (Great Britain).

Official fuel consumption tests are designed to represent real-life driving situations and to provide a guide to the models most likely to show good fuel economy. The tests do not guarantee the fuel consumption of any particular car and there will inevitably be differences between cars of the same model. Loading, weather, traffic conditions, over all mileage and particularly driving style and standard of maintenance are factors which can affect the achievement of better fuel economy.

Manufacturer Model	Saab 900 Cabriolet
Imperial	mpg
Urban	23.0
56 mph	41.5
75 mph	27.7
Metric	l/100 km
Urban	12.3
90 km/h	6.8
120 km/h	10.2

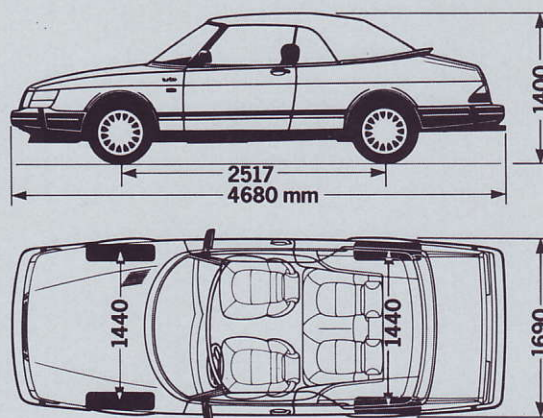
## STANDARD EQUIPMENT

Power-assisted steering. Cruise Control. Self-repairing bumpers. Front air dam and rear spoiler. Aluminium wheels. Halogen headlamps, switched off automatically with the ignition. Reversing lights. Rear fog lights. Extra direction indicator lamps on the wings. Headlamp wipers. Windscreen wipers with intermittent action setting. Driver and passenger door mirrors, electrically adjustable from the inside. Wide angle mirror on the driver's side door. Dipping rear view mirror. Electrically operated windows. Tinted windows all round. Heated rear window. Central locking. Electrically heated front seats (adjustable heating on the driver's seat). Steplessly adjustable backrest rake. Front seat head restraints, adjustable for height. Driver's seat cushion adjustable for height and slope. Headrests in the back seat. Storage pockets in the rear

of the front seat backrests. Leather upholstery of "Contour" design. Four inertia reel seat belts. Padded sun visors, with vanity mirror on the passenger side. Front centre console. Speakers in the top of the fascia. Rear speakers. Electrically operated aerial. Delayed action interior lighting. Ignition switch illumination. Cigarette lighter. Illuminated, lockable glove compartment. Electrically operated top. Ventilation air filter (not on cars with air conditioning). Fabric-lined luggage compartment. Luggage compartment lighting. Tow hooks front and rear.

## EXAMPLES OF OPTIONAL EQUIPMENT

The Saab 900 Cabriolet can be equipped with: Air conditioning. Metallic paintwork.



■ All particulars and illustrations in this brochure are based on the specification of the car valid at the date of the final editing of the publication. The technical specifications and equipment vary from one market to the next and may be altered without prior notice. For further information, please consult your Saab dealer. Note that some of the pictures in the brochure may show cars fitted with optional extra equipment.

■ All cars sold in the United Kingdom and Australia are equipped with right hand drive, unless specifically ordered to the contrary.





**Saab-Scania holds a leading position in the transport and communication fields. The Group's technical know-how has been developed since the turn of the century. Its products can be found on the road, in the air and in space.**

Vabis was supplying factory-made vehicles as far back as 1897. Scania introduced its first passenger car—with the griffin on the bonnet—in 1901. The first truck followed in

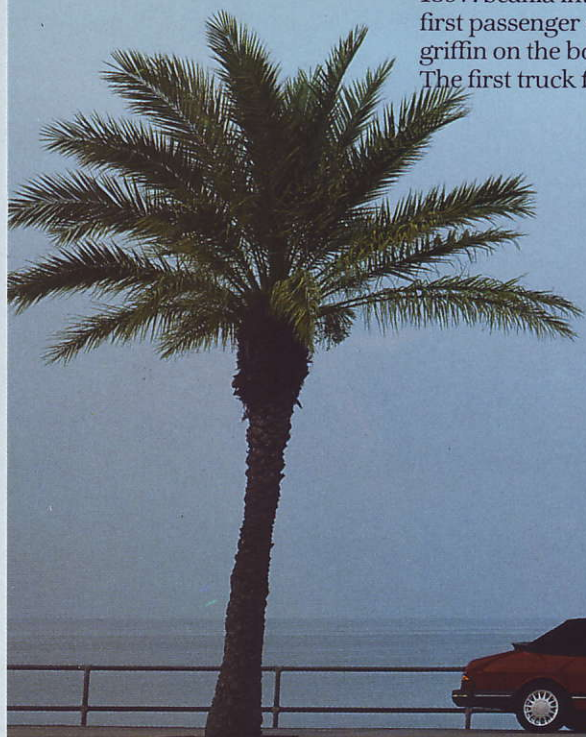
1902 and the first bus in 1911. Production of aircraft started in the early 1930s.

In the automotive and aerospace sectors, Saab-Scania's product program currently comprises passenger cars, trucks and buses, commercial and military aircraft, satellites and missiles.

Outside the transport technology and communication sectors, Saab-Scania also supplies advanced products and systems in electronics, optics and precision mechanics, as well as systems for energy recovery and heating.

In 1985, Saab-Scania had sales of about SEK 32 billion, with 47,000 employees.

During the period 1981 to 1985, Saab-Scania had capital expenditures totaling approximately SEK 15.2 billion. Of this amount, SEK 6.9 billion was invested in property, plant and equipment and SEK 8.3 billion in research and development. Capital expenditures in 1985 amounted to SEK 4.4 billion, or 13.8 percent of sales.







Saab-Scania's products are concentrated in well-defined business areas: high-performance passenger cars, trucks for heavy transport and aircraft for regional traffic.

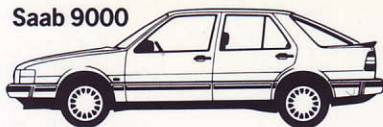
**This concentration in expansive market segments, combined with substantial investments in new products, has borne fruit. Saab-Scania today holds a leading position in the field of specialized transport technology.**

**Saab-Scania's company symbol represents sound technical know-how, long tradition and broad-based experience.**

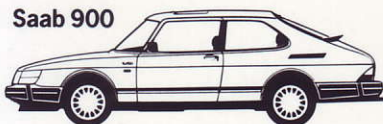




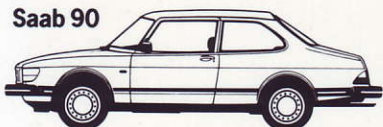
**Saab 9000**



**Saab 900**



**Saab 90**



■ Three product lines of Saab cars are manufactured—the Saab 9000, Saab 900 and Saab 90. The ratings of the engines powering the different models vary from the 175 hp DIN developed by the turbocharged 16-valve engine to the 100 hp DIN of the carburettor engine. Note that the model range may vary between different markets.

**Saab-Scania AB**  
**Saab Car Division**  
**Nyköping, Sweden**

---

